



# SimpliLinux

## SMX-RKY01

SMX-RKY01 (HW Key) User Manual

07/2020  
man-en-smx-rky01.docx  
Version 1.0

## Legal Notices

### Warning Notice System

This document contains alerts and information indications for the safety of you and your devices. The symbols and meanings used to draw your attention to these notifications are listed below.



**Danger:** Indicates that death or severe personal injury will result if proper precautions are not taken.



**Warning:** Indicates that death or severe personal injury may result if proper precautions are not taken.



**Info:** Indicates advice or **information**.

### Qualified Personnel

It is assumed that what is described in this document will be applied by qualified personnel for the specific task.

### Disclaimer

We have reviewed the contents of this publication to ensure consistency with the hardware and software described. Since variance cannot be precluded entirely, we cannot guarantee full consistency.

The information in this publication is reviewed regularly and any necessary corrections are included in subsequent editions.

## Change Log

Version	Date	Description
V1.0	07/2020	

## **Preface**

### **Purpose of the Document**

This document contains information about the following topics;

- ◆ Activation of SMX-RKY01
- ◆ Using DTLocker+ G3

### **Required Level of Knowledge**

In order to fully understand and apply this document, it is necessary to have knowledge of IT, Automation and Electricity.

# Contents

Legal Notices .....	- 1 -
Warning Notice System .....	- 1 -
Qualified Personnel .....	- 1 -
Disclaimer .....	- 1 -
Change Log .....	- 2 -
Preface.....	- 3 -
Purpose of the Document .....	- 3 -
1. Required Hardware and Software .....	- 5 -
2. Specifications.....	- 6 -
3. Preparing Hardware .....	- 7 -
3.1. SMX-RKY01 (HW Key) Physical Connection .....	- 7 -
4. Use of SMX-RKY01 .....	- 8 -
4.1. Updating Password and Hint .....	- 10 -
4.2. Updating Contact Information.....	- 11 -
4.3. Accessing Files in SMX-RKY01 .....	- 11 -

# 1. Required Hardware and Software

The hardware & software to be used in this manual is listed below.

## Hardware

- ◆ 1 x SMX-RKY01
- ◆ User PC

## Software

- ◆ Windows 7 or Windows 10 (32 Bit or 64 Bit) Operating System
- ◆ Web Browser (Preferably Google Chrome)

## 2. Specifications

Property	Description
Interface	1xUSB 2.0 Type A
Operating System	Windows 7 (32/64 bit) Windows 8/8.1 (32/64 bit) Windows 10 Windows Server 2008
Outer Case	Metal
Temperature (Study)	0°C to 60°C
Temperature (Storage)	-20°C to 85°C
Physical Measurements	65.76 mm x 17.98 mm x 10.7 mm
Certificate	SSL Certificate 2048 Bit

## **3. Preparing Hardware**

### **3.1. SMX-RKY01 (HW Key) Physical Connection**

Plug the SMX-RKY01 into an available USB port on your laptop or desktop PC and wait for Windows to detect new USB device.



## 4. Use of SMX-RKY01

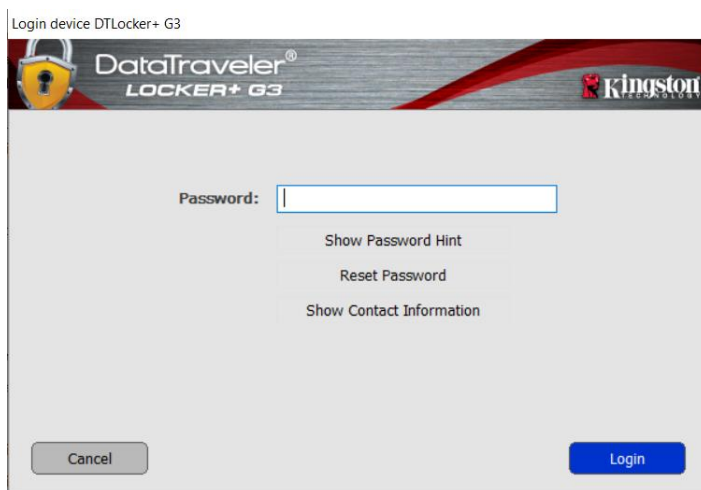
The user certificate is stored in USB, which encrypts at hardware level. The certificate is only valid as long as it is stored on this USB disk. Each certificate is marked with the USB serial number. The USB disk is protected by an external password. USB disk content cannot be displayed unless the password is entered.

You must pass the security phase before SMX-RKY01 can be used. To do this, you can follow these steps;

- ◆ After Windows detects SMX-RKY01, the "Auto Use" window will open. From this window, you can switch to the "Kingston Password" screen by selecting the "DTLplus\_Launcher.exe" option.



If the "Auto Use" window is not opened, run "Mycomputer"->"DTL+G3"->"DTLplus\_Launcher.exe" The password screen will open.



In the password screen that opens, there are different options besides the password field. These are as follows;

**Show Password Hint:** Shows a previously determined hint about your password.

**Reset Password:** This option should not be used to reset the password. When used, it completely resets and deletes your certificates. Your SMX-RKY01 password is unique to you. It is not saved on the system or anywhere. There's no way to reset it if you forget your password. The only thing that can be done is to reset the SMX-RKY01 completely and re-create the certificate files. This is a manual procedure and you need to contact Simplinx technical service.

**Show Contact Information:** Shows contact information.

- ◆ If you are entering your password for the first time, enter the default password.
- ◆ After entering your password, press ENTER.
- ◆ The relevant USB Disk files can be viewed. You can close the Explorer tabs that are opened.
- ◆ Your user certificate is ready for use.



Pre-defined Password: "@S123456"

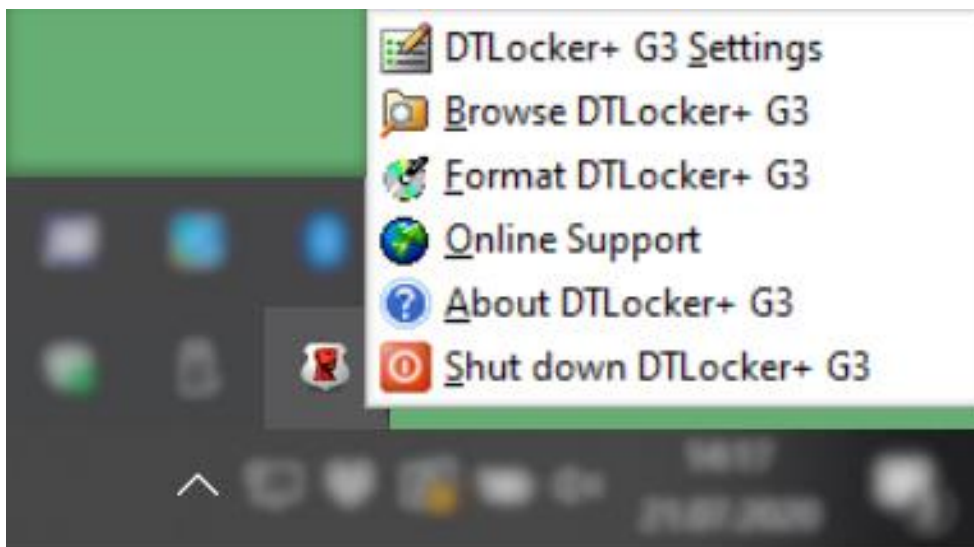


SMX-RKY01 certificate is protected by hardware with an external password. Entering the password incorrectly 10 times or using the "Reset Password" option will **invalidate your certificate**.



For security reasons, it is recommended that you change the predefined password in the first use.

Windows taskbar will have an app called "DTLocker+G3". With this app, you can update your password & information.



## 4.1. Updating Password and Hint

To change your password or hint, click on the app in the Windows Taskbar, and then go to "DTLocker+G3 Settings". The first screen that opens is the one where information about the password is changed.



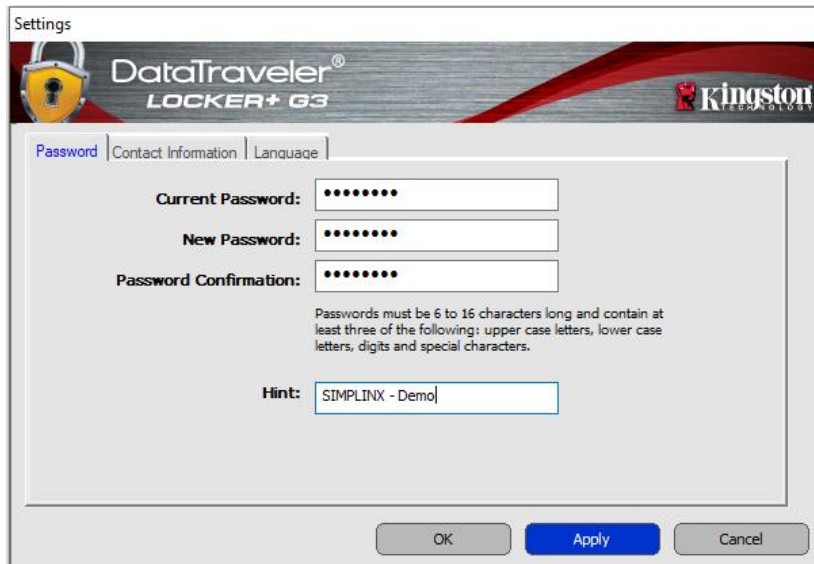
The screenshot shows the "Settings" dialog box for DataTraveler Locker+G3. The "Password" tab is selected. The dialog contains the following fields and text:

- Current Password:** [Empty text box]
- New Password:** [Empty text box]
- Password Confirmation:** [Empty text box]
- Hint:** SIMPLINX [Text box]

Below the fields, the following text is displayed: "Passwords must be 6 to 16 characters long and contain at least three of the following: upper case letters, lower case letters, digits and special characters." At the bottom of the dialog are three buttons: "OK", "Apply", and "Cancel".

To change your password, enter your current password to the "Current Password" field. Then enter your new password in the "New Password" and "Password Confirmation" fields

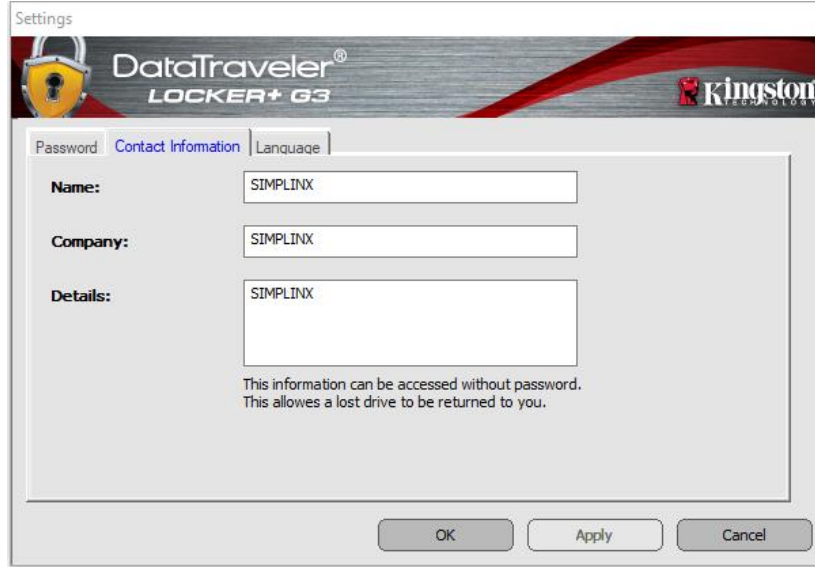
If you also want to change the hint, you can enter and save new hint information in the bottom "Hint" field.



The screenshot shows the "Settings" dialog box for DataTraveler Locker+G3, identical to the previous one, but with the password fields filled with dots. The "Hint" field now contains the text "SIMPLINX - Demo". The "Apply" button is highlighted in blue, indicating it is the active button.

## 4.2. Updating Contact Information

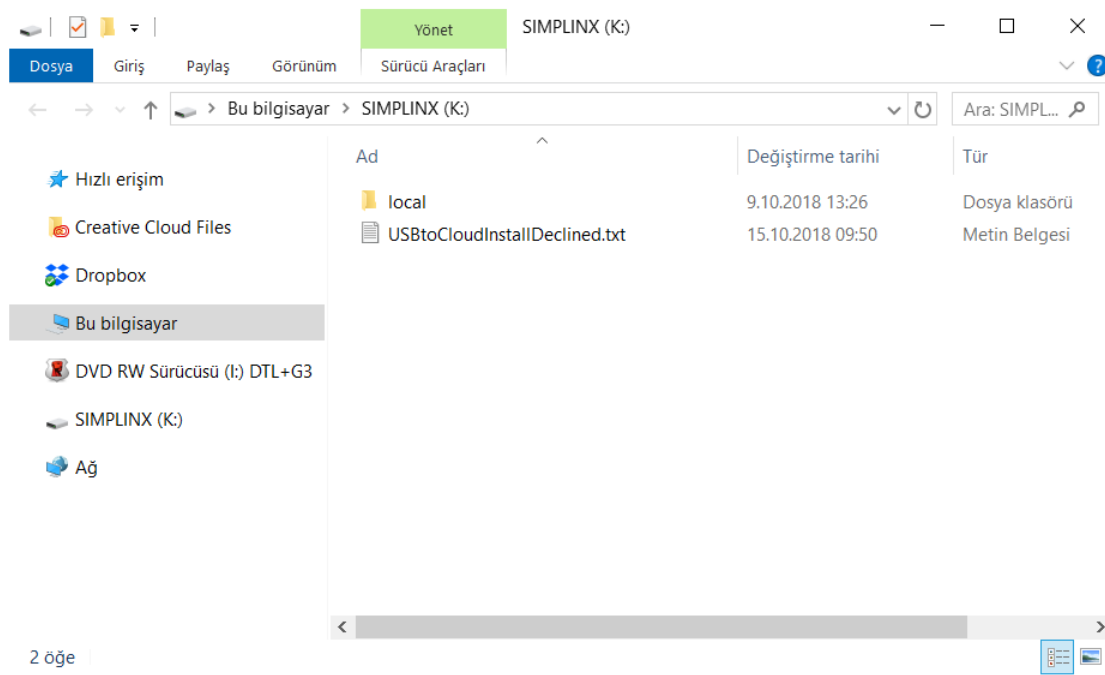
To change the contact information of the owner of SMX-RKY01, click on the app in the Windows Taskbar, then go to "DTLocker+G3 Settings". Go to the "Contact Information" tab.



The information here comes as **SIMPLINX** by default.

## 4.3. Accessing Files in SMX-RKY01

In order to access files on SMX-RKY01, click on the app in the Windows Taskbar, and then select "Browse DTLocker+G3". The files in SMX-RKY01 will be listed.





07/2020  
man-en-smx-rky01.docx  
Version 1.0

**SimpLinx Elektronik Ltd.**

Halil Rifat Pasa Mh. Nazli Sk. No:1/5 No:17 Sisli/Istanbul  
[www.simplinx.com](http://www.simplinx.com)