



SimpliLinux

SMX-RNS02 - VNC Connectivity Guide

VNC Connection Guide for Simplinx Remote Connection Devices

07/2020
man-en-smx-rns-vnc.docx
Version 1.2

Legal Notices

Warning Notice System

This document contains alerts and information indications for the safety of you and your devices. The symbols and meanings used to draw your attention to these notifications are listed below.



Danger: Indicates that death or severe personal injury will result if proper precautions are not taken.



Warning: Indicates that death or severe personal injury may result if proper precautions are not taken.



Info: Indicates advice or **information**.

Qualified Personnel

It is assumed that what is described in this document will be applied by qualified personnel for the specific task.

Disclaimer

We have reviewed the contents of this publication to ensure consistency with the hardware and software described. Since variance cannot be precluded entirely, we cannot guarantee full consistency.

The information in this publication is reviewed regularly and any necessary corrections are included in subsequent editions.

Change List (Change Log)

Version	Date	Description
V1.0	07/2020	Draft
V1.1	07/2020	Typos
V1.2	07/2020	Typos

Preface

Purpose of the Document

The document contains information about the following topics;

- ◆ VNC Setup
- ◆ VNC Connection over the Web

Required Level of Knowledge

In order to fully understand and apply this document, it is necessary to have knowledge of IT, Automation and Electricity.

Contents

Legal Notices	- 1 -
Warning Notice System	- 1 -
Qualified Personnel	- 1 -
Disclaimer	- 1 -
Change List (Change Log).....	- 2 -
Preface.....	- 3 -
Purpose of the Document	- 3 -
Required Level of Knowledge	- 3 -
1. Required Hardware and Software	- 5 -
2. Prerequisites.....	- 6 -
2.1. VNC Broadcast with PC.....	- 6 -
2.2. VNC Broadcast with HMI	- 7 -
3. Hardware Preparation and Connections	- 8 -
3.1. Preparing Hardware.....	- 8 -
4. VNC Connection Test	- 10 -

1. Required Hardware and Software

The software and hardware to be used in the VNC connection guide is listed below.

Hardware

- ◆ 1 SMX-RNS02 Module
- ◆ 2 at least 1 meter Ethernet Cable
- ◆ 1 SMX-RKY01 or 1 SMX-RKS01
- ◆ DC Power Supply (At least 24V 1A or 12V 2A)
- ◆ 1 Pc User
- ◆ 1 PC for VNC server (Optional)
- ◆ 1 VNC Panel (Optional)

Software

- ◆ Windows 7 or Windows 10 (32 Bit or 64 Bit) Operating System
- ◆ Web Browser (Preferably Google Chrome)
- ◆ VNC Server Program (TightVNC program will be used in this document) (Optional)
- ◆ Administrator authority to install required programs



The SX-Client program installs network and USB drivers, so administrator rights will be required during installation.



Administrator rights will be required because the SX-Client program changes network settings while running.

2. Prerequisites

2.1. VNC Broadcast with PC

If VNC Server is not installed on your PC you can install it by following the steps below. If it is installed, you can proceed to the "Hardware preparation and Connections" chapter.

TightVNC Setup

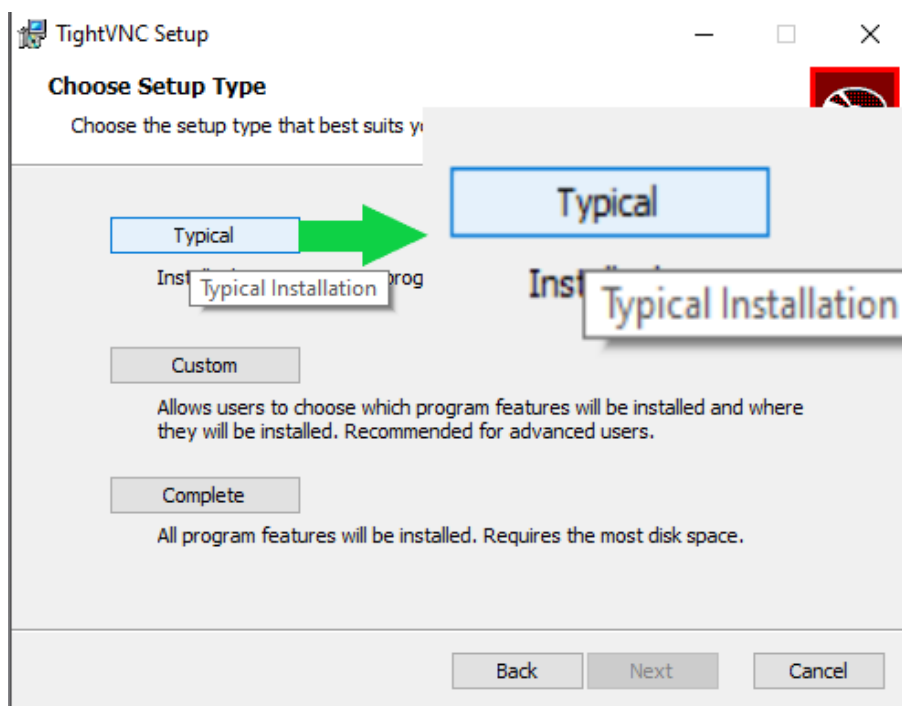
You can download TightVNC from the link below.

<https://www.tightvnc.com/download.php>



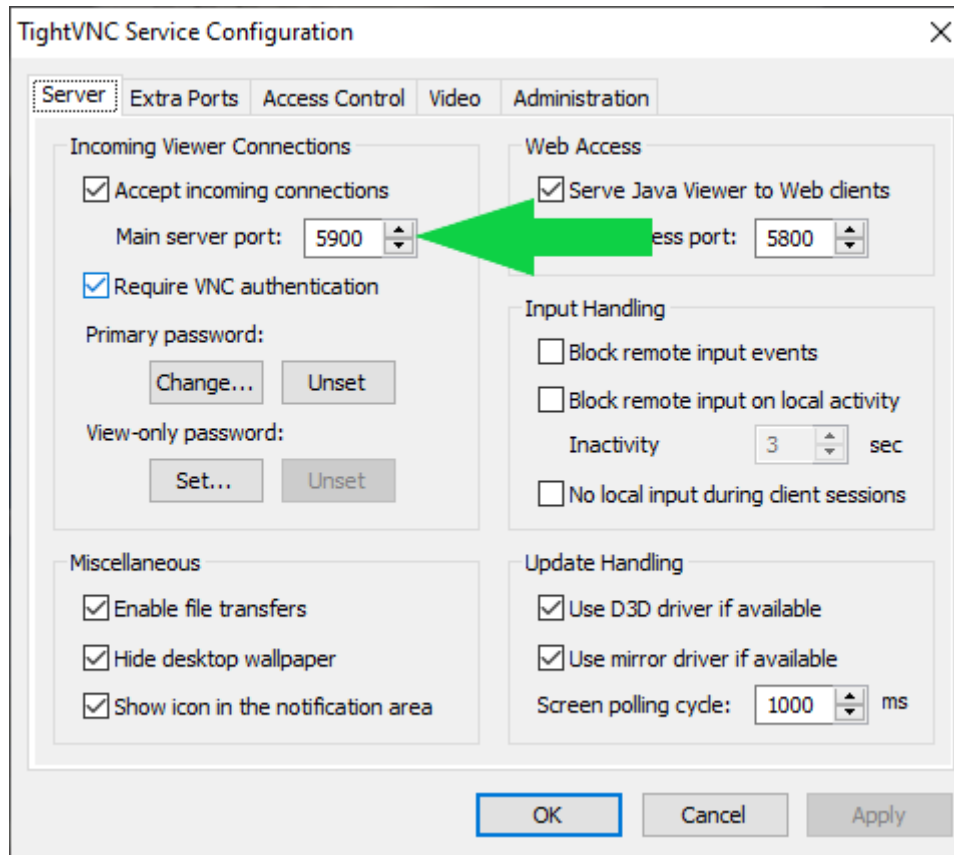
The TightVNC program offers two different versions for 32 Bit and 64 Bit operating systems. Downloading the wrong version will cause the program not to work.

- ◆ Start the TightVNC Setup.
- ◆ Continue setup with the Typical option.



- ◆ After setup is finished, right-click the TightVNC icon from programs running at the bottom right, and then open the "Configuration" page.
- ◆ You can set the port where you want VNC to broadcast with the "Main Server Port" option on the "Configuration" page. The VNC port is 5900 as default.

- ◆ Your VNC connection password is determined as the same as your Windows user password. You can change your password with the "Change" button in the "Primary password" block just below "Main Server Port", or you can remove it with the "Unset" button.



2.2. VNC Broadcast with HMI

- ◆ Power up your HMI that you want to broadcast vnc.
- ◆ Turn on the VNC broadcast feature.
- ◆ Determine your panel's VNC broadcast port. (VNC port is 5900 as Default)
- ◆ Set the panel's IP address to a blank IP address in the IP block that you exported to your SMX-RNS02 module.

✓ Example

If the LAN address of your SMX-RNS02 module is in the settings on the network.

- IP: 192.168.168.254
- Subnet Mask: 255.255.255.0
- IP (PC): 192.168.168.250

In this case, you must provide an IP address to the IP address of your VNC Panel in the range [192.168.168.249] and [192.168.168.251 - 192.168.168.253].

3. Hardware Preparation and Connections

3.1. Preparing Hardware

Power up SMX-RNS02.

- ◆ After 30s "Ready LED" will lit steady.



Wrong or incomplete connection may damage you, those around you, or your devices.

See the relevant documents for detailed information and electrical drawings.

Connect your SMX-RNS02 device to the internet. You can review the relevant documents to find out how the device connects to the Internet.

- ◆ If the Internet connection is ready, the "Online LED" will lit steady.

If you want to broadcast VNC with PC;

- ◆ Connect your PC to your VNC Server with an Ethernet cable to your SMX-RNS02 device.
- ◆ Adjust your SMX-RNS02 device and the IP settings for the PC you will install VNC server.



You can review the relevant documents to learn how to configure IP settings and how to make an Ethernet connection.



After you change the settings, you must restart the SMX-RNS02 module for the new settings to take effect.

- ◆ Activate your VNC Server on your computer.

If you want to broadcast VNC with the Panel.

- ◆ Connect your panel to your SMX-RNS02 device with an Ethernet cable..
- ◆ Adjust the IP settings for your SMX-RNS02 device.



You can review the relevant documents to learn how to configure IP settings and how to make an Ethernet connection.



After you change the settings, you must restart the SMX-RNS02 module for the new settings to take effect.

- ◆ Download and install an SX-Client program on the computer to connect remotely.



You can review the relevant documents for the installation of the SX-Client program.

- ◆ If your SMX-RNS02 device is not registered, register it.

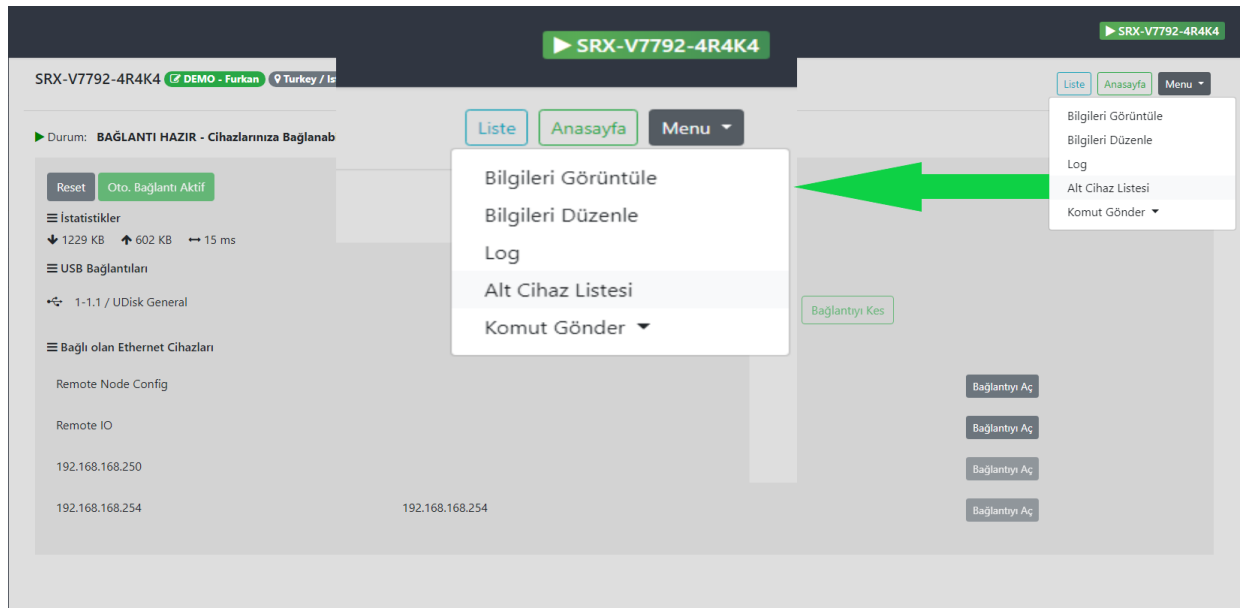


You can review the relevant documents for registration.

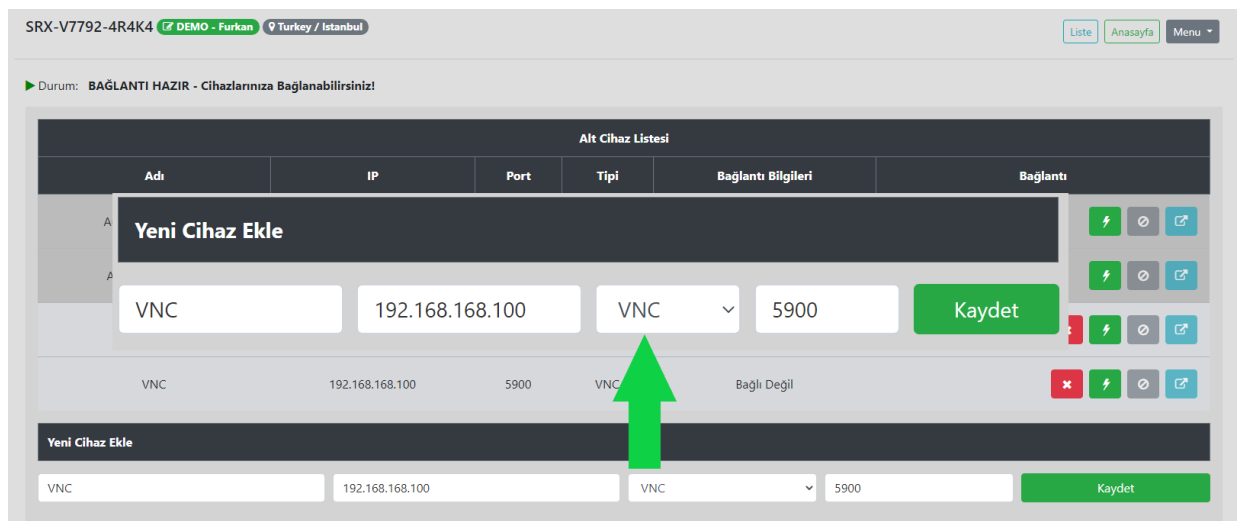
4. VNC Connection Test

Connect to your SMX-RNS02 device. You can review the relevant documents to establish a Remote Connection.

- ◆ After you successfully set up the Remote Link, go to the Right Menu > Sub device list.














- ◆ On the Subdevice page, add a New Device in the IP address of your VNC Streaming device and the VNC Port number and the "VNC" tip.



- ◆ The device you added will appear on the "Subdevice List".
- ◆ Press the green "Connect" button next to the device you added.

SRX-V7792-4R4K4 DEMO - Furkan Turkey / Istanbul

Durum: BAĞLANTI HAZIR - Cihazlarınıza Bağlanabilirsiniz!

Adı	IP	Port	Tipi	Bağlantı Bilgileri	Bağlantı
Auto - Web Config	192.168.169.254	3000	HTTP	Bağlı Değil	  
Auto - Remote IO	192.168.169.254				
VNC	192.168.168.100				











Yeni Cihaz Ekle

Adı IP Port Kaydet

- ◆ Ip and Port numbers will appear in the Connection Information section.

SRX-V7792-4R4K4 DEMO - Furkan Turkey / Istanbul

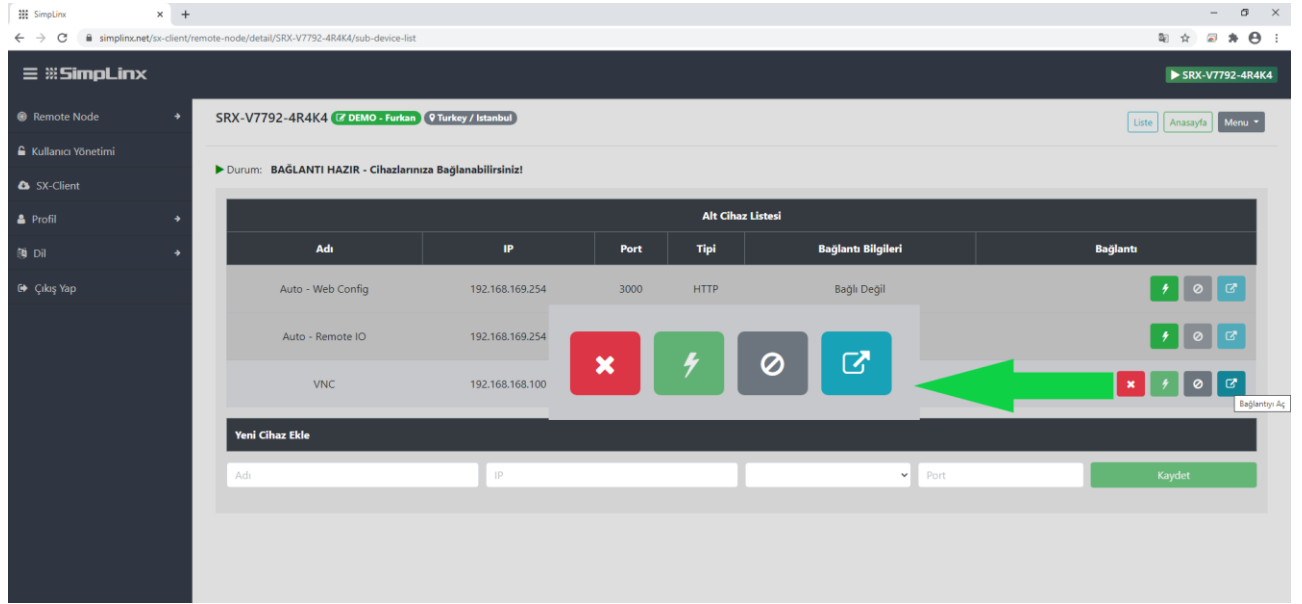
Durum: BAĞLANTI HAZIR - Cihazlarınıza Bağlanabilirsiniz!

Adı	Bağlantı Bilgileri	Bağlantı
Auto - Web Config	Bağlı Değil	  
Auto - Remote IO	Bağlı Değil	  
VNC	172.104.141.153:20376	   

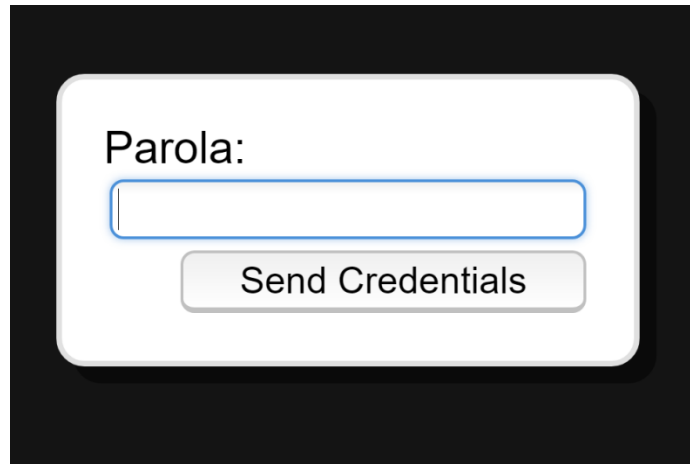
Yeni Cihaz Ekle

VNC 192.168.168.100 VNC 5900 Kaydet

- ◆ Press the blue "Open Connection" button next to the device you added.



- ◆ A new window will open and if you have set a password, you will be asked to enter it.



- ◆ Once you've entered your password, you can continue by pressing the "Send Credentials" button. Your VNC connection has been created.
- ◆ After you're done, you can disconnect by pressing the gray "Disconnect" button next to the "Connect" button.



07/2020
man-en-smx-rns-vnc.docx
Version 1.2

SimpLinx Elektronik Ltd.

Halil Rifat Pasa Mh. Nazli Sk. No:1/5 No:17 Sisli/Istanbul
www.simplinx.com